

JV FRAMEWORK FOR JOOMLA! 1.5

USER GUIDE

Starting JV Framework

You can start JV Framework either by clicking on its icon in Components menu or by clicking on its name in the Template manager, which can be found within Extensions menu.

Theme manager

The screenshot shows the Joomla! Theme Manager interface. At the top, there's a navigation bar with links: Site, Menus, Content, Components, Extensions, Tools, Help. Below this is the 'Theme Manager' header with a 'Help & Update' link. The main area contains a table of installed themes. Annotations with red and blue boxes and arrows provide instructions on how to use the interface.

Annotations:

- Red box 1:** Use these buttons to set a theme as activated, deactivated or the default theme (points to Active, Deactive, Default buttons).
- Red box 2:** Use this button to upload/install a new, compatible theme (points to Upload theme button).
- Red box 3:** Use this button to duplicate a selected theme (points to Duplicate button).
- Blue box 1:** Click on the thumbnail or a theme's name to enter Theme Edit and start working on its layout (points to the 'JV Melody' theme name and thumbnail).
- Blue box 2:** Check this circle to select a theme without entering the Theme Editor (points to the selection circle next to the 'JV Melody' theme).

#	Theme	Default	Assigned	Version	Creation date	Author	Status	ID
1	JV Melody			1.5.3.8	April 2011	JoomlaVi! Project Email: info@joomlavi.com Website: http://www.joomlavi.com	✓	jv-me
2	JV Melody	★		1.5.3.9	June 2011	JoomlaVi! Project Email: info@joomlavi.com Website: http://www.joomlavi.com	✓	1

Joomla! is Free Software released under the GNU/GPL License.

The Theme manager is where you can:

- Chose a theme to work on: To do this, click on the theme's name or its thumbnail.
- Activate or deactivate a theme: To do this, select a theme by checking the circle in front it and press Activate/ Deactivate.
- Set a theme to default: To do this, select a theme by checking the circle in front it and press Default
- Duplicate a theme: To do this, select a theme by checking the circle in front it and press Duplicate
- Upload a new theme: To do this, press Upload Theme. If you are installing from a package file on your computer, type into the 'Upload file' box the path that leads to said package file or use the browse button to find it manually. If you are installing from a url, copy and paste or type the url link into the 'install from url' box.

Theme Edit:

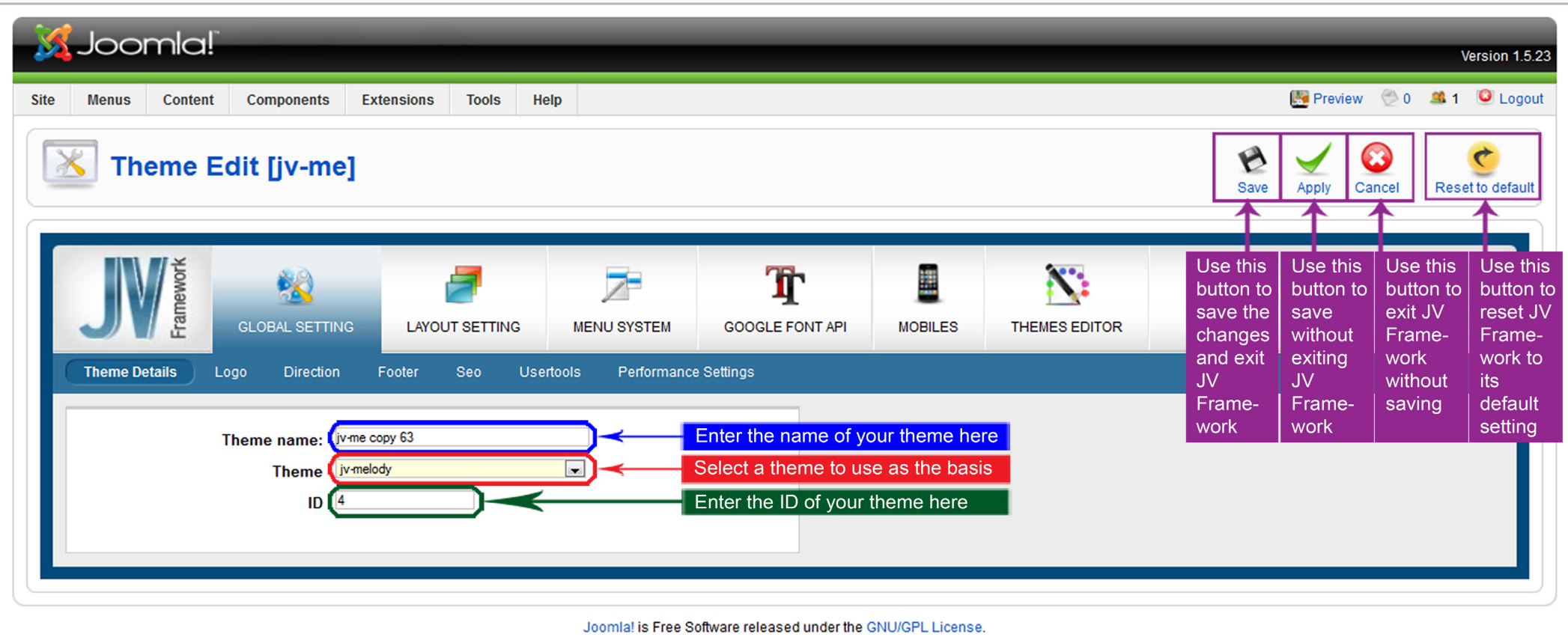
After clicking on a theme’s name or thumbnail in Theme Manager, you will be brought to the Theme Edit page

In the upper right corner of Theme Edit page are:

Save button: Save the changes and exit Theme Edit.

Apply button: Save the changes without exiting Theme Edit.

Cancel button: Exit Theme Edit without saving.



Global setting

Theme details

If you are working on a duplicated theme, you can change the theme’s name, its base theme and Id here (see theme edit illustration)

Logo

This is where your logo can be managed. You can set it up to be a string of text with slogan or an image, then choose where it should be displayed in your website.

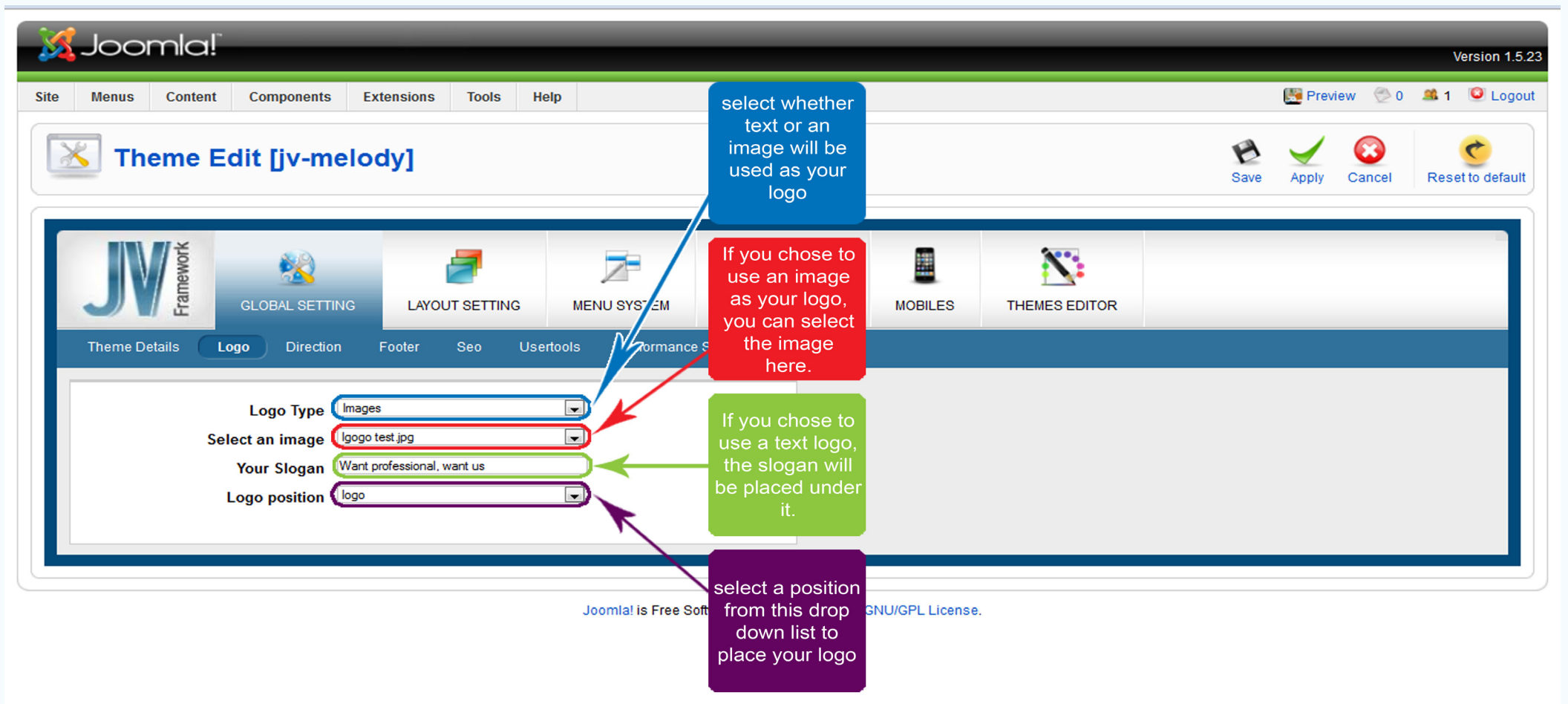
The ‘Select image’ dropdown menu will be changed into a text box if you choose a text type logo

To add new images, copy them to a folder named ‘images’ within your website’s directory. Refresh your JV Framework theme editor and they will appear inside the ‘select an image’ drop down list.

You can check where the positions from the ‘Logo position’ drop down list are with Layout Manager, which can be found within Layout Setting.

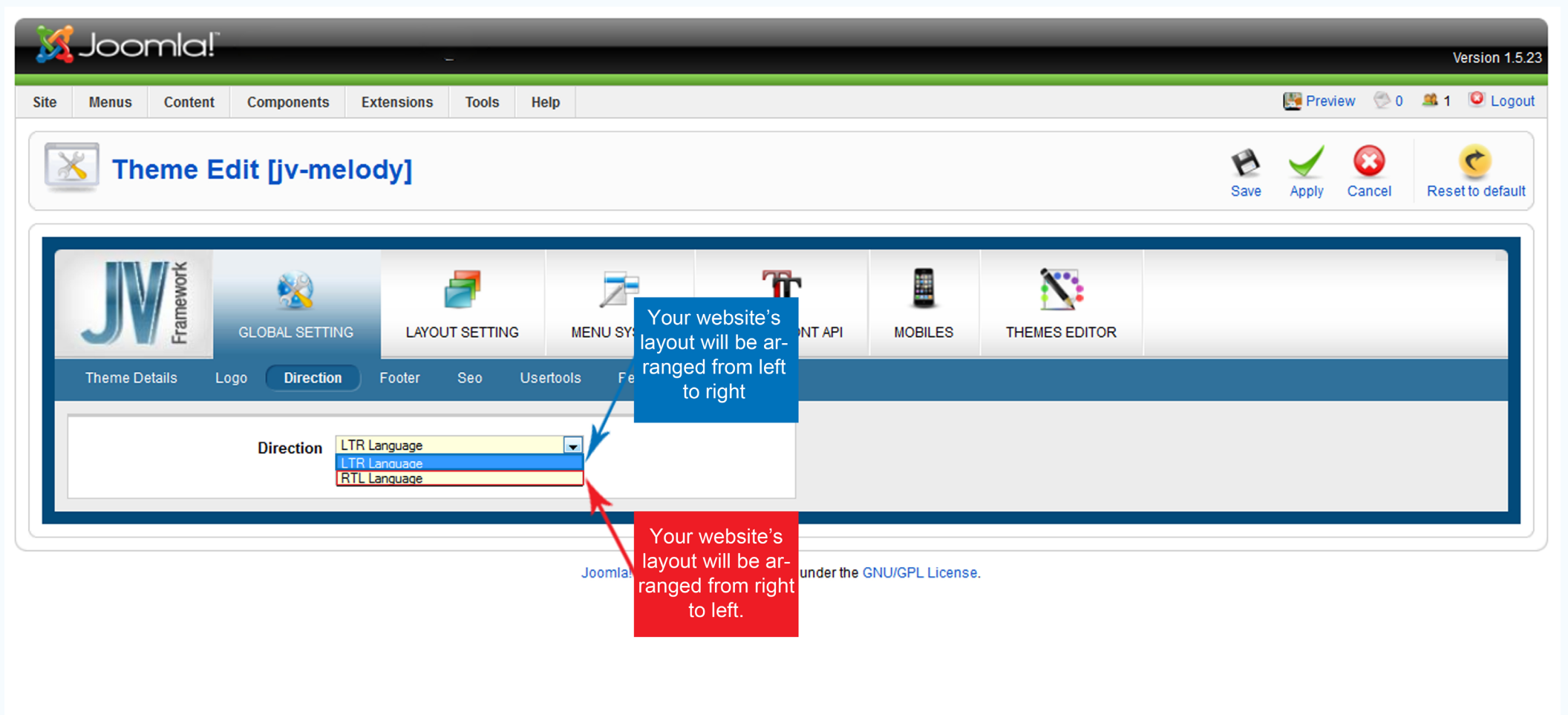
In case your image is too big for the default logo size, you can edit it using theme editor. The size is stored in line 21 and 22 of ‘template.css’ and should look like this

```
/* Logo */
#logo {width:168px; height:68px; float: left;}
#logo a { background:url(..images/logo.jpg); display: block; height:64px; width: 100%;}
```



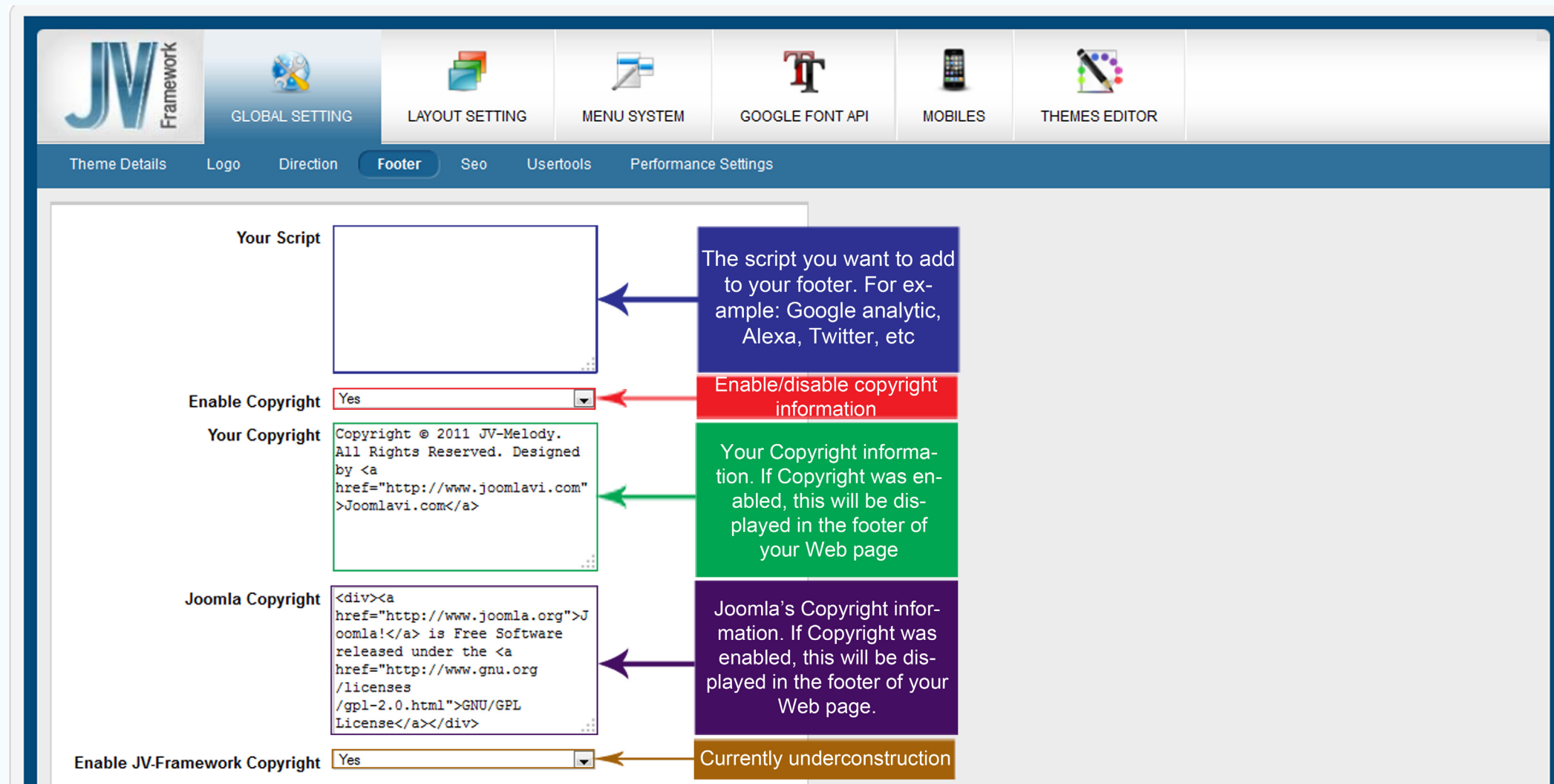
Direction

Here you can choose whether your page should be read from Left to Right (LTR) or Right to Left (RTL).



Footer

This sub-tab allows you to add footers to the bottom of your page. Footers can be anything from text, Copyright claim or special items like Google Analytic, Twitter, etc



Seo

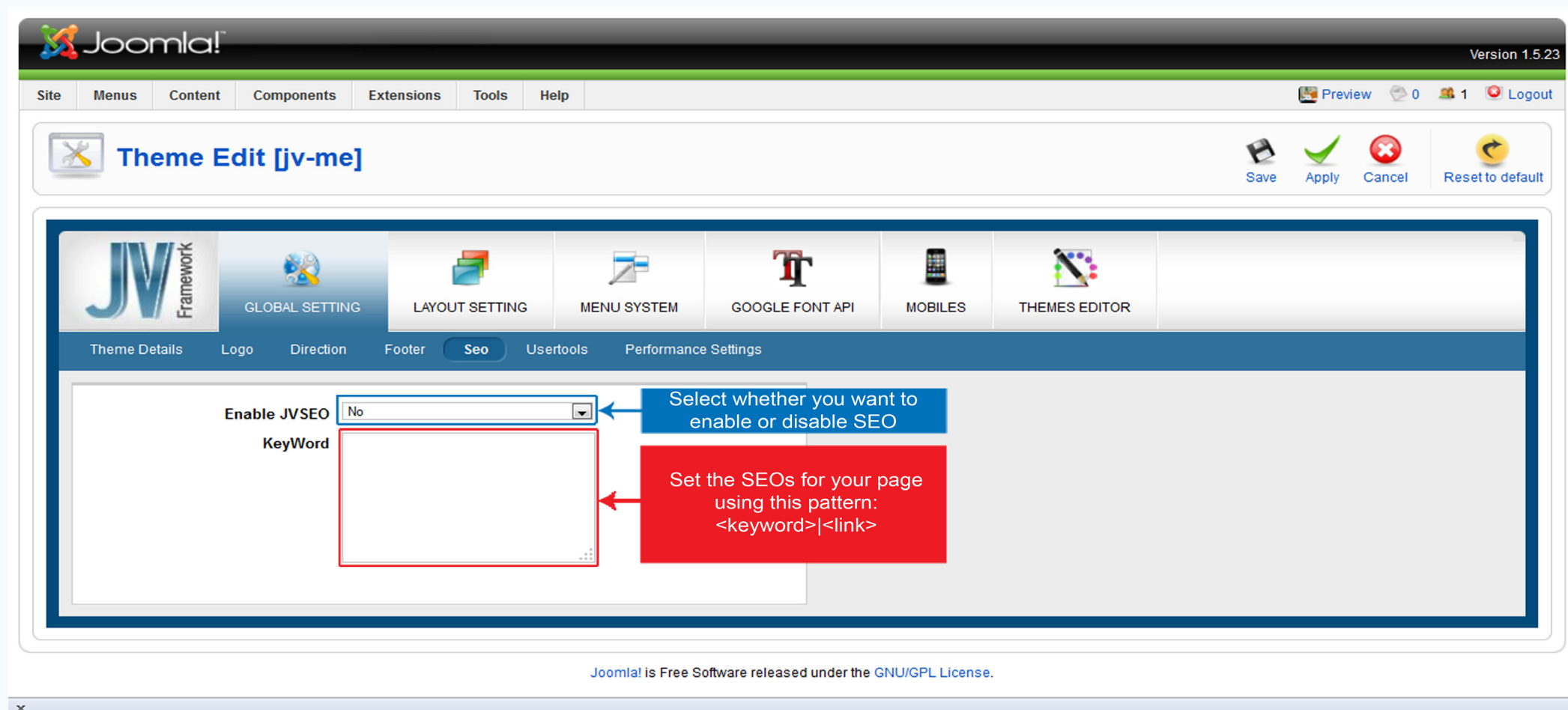
With this sub-tab you can set up SEO (Search Engine Optimization) for your page.

In lay man terms, you can assign addresses to certain keywords, and whenever said keywords show up in your articles, they'll be converted into links to those addresses. This is essential to get a higher rank in search engines, increase net traffic and such.

To set up a SEO keyword, use the following pattern:

<Keyword>|<Address>

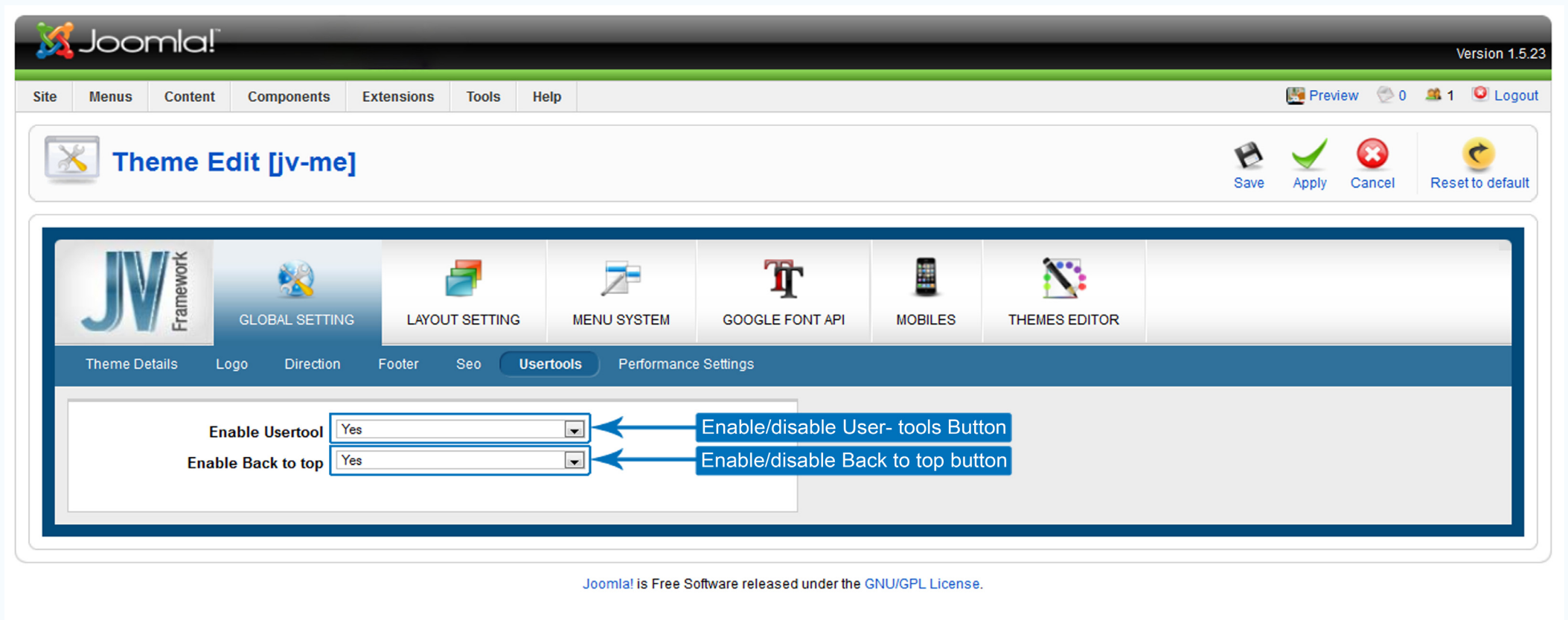
For example: Google|http://www.google.com



User tools

You can choose to enable or disable User tools and Back to Top button on your page:

- User tools allow you to make simple modifications to your template's layout without using the administration page.
- Back to top allow you to return to the top of the page quickly.



Performance Settings

'Performance Settings' allows you to make choices that will affect the load speed and performance of your website.

-Layout cache: Enable this will allow your layout to be saved in the cache, accelerating the page's load speed.

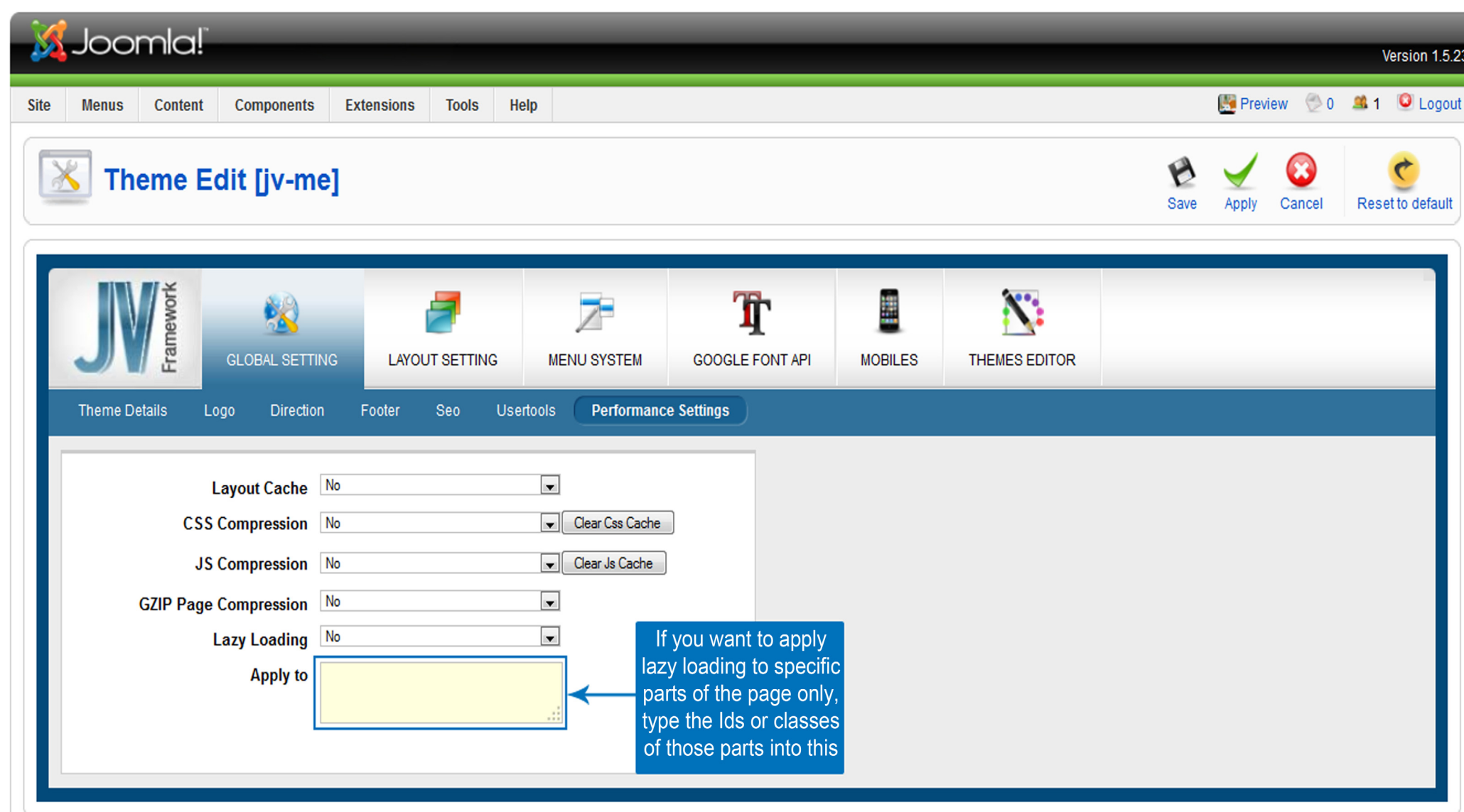
-CSS Compression and JS Compression: Enable or disable CSS/JS Compression respectively. Enabling Compression will enhance your page's loading speed.

Remember to clear the CSS or JS cache before changing these settings if you want the effect to take place immediately. Otherwise, they will take effect after 24 hours.

-GZIP Page Compression: Compressing GZIP Page to enhance the page's loading speed.

-Lazy Loading: Allow your visitor to download only the portion of the page they are focusing on instead of the whole page.

*Apply to (For Developers): If you want to apply lazy loading to specific parts of the page only, type the Ids or classes of those parts into this box.



Layout Setting

This tab is where you change the layout of your template.

Layout

This sub-tab allows you to setup some basic properties for your layout like:

- Font size: Self-explanatory, the size of your fonts.
- Font Family: Self-explanatory
- Template width: Self-explanatory
- Sidebar1/Sidebar2 width: the width of your side bars.
- Space width: Width of the space between positions.
- Theme color: The main color of your theme
- Assign theme: If you are not working on the default theme, this menu allows you to assign the theme you are working on to menu items.

If you want to apply the theme to all items, simple select 'Select all' and click 'Apply'.

If you want to apply the theme to certain items, highlight them, select 'Apply selected' and click 'Apply'.

If you don't want to apply the theme to any item in the list, select 'Select none' and click 'Apply'.

Layout

Layout manager

Font Size

12

Font Family

Tahoma, Geneva, sans-serif

Template width

960

Sidebar1 width

240

Sidebar2 width

240

Space width

20

Theme color

black

Assign theme

☐ Select all
 ☐ Select none
 ☐ Apply selected

What's New in 1.5?
 Joomla! Overview
 - What's New in 1.5?
 - What's New in 1.5?
 - What's New in 1.5?
 - What's New in 1.5?
 What's New in 1.5?
 What's New in 1.5?
 Joomla! Overview
 - What's New in 1.5?
 - What's New in 1.5?
 - What's New in 1.5?
 - What's New in 1.5?
 Joomla! Overview
 - What's New in 1.5?
 - What's New in 1.5?
 - What's New in 1.5?
 - What's New in 1.5?
 Joomla! Overview
 - What's New in 1.5?
 - What's New in 1.5?
 - What's New in 1.5?
 - What's New in 1.5?
 Main Menu - Top theme

If you want to apply the theme to all items, simple select 'Select all' and click 'Apply'.

If you want to apply the theme to certain items, highlight them, select 'Apply selected' and click 'Apply'.

If you don't want to apply the theme to any item in the list, select 'Select none' and click 'Apply'.

Visual explanation of Template Width, Sidebar Width and Space Width:

USER1

Lorem ipsum dolor sit amet, consectetur adipiscing elit.

USER2

Lorem ipsum dolor sit amet, consectetur adipiscing elit.

USER3

Lorem ipsum dolor sit amet, consectetur adipiscing elit.

USER4

Lorem ipsum dolor sit amet, consectetur adipiscing elit.

Space width

VMENU

HOME

JOOMLA! OVERVIEW

JOOMLA! LICENSE

MORE ABOUT JOOMLA!

FAQ

THE NEWS

WEB LINKS

NEWS FEEDS

LOGIN FORM

WELCOME TO THE FRONTPAGE

Example Pages and Menu Links

Written by Administrator Tuesday, 12 August 2008 09:26

Template width

Lorem ipsum dolor sit amet, consectetur adipiscing elit. Etiam dapibus odio non mauris iaculis ac mattis orci ultricies. Aenean iaculis feugiat augue vel facilisis. Quisque vel justo dui, vitae varius augue. Lorem ipsum dolor si

Read more

ACCORDION MENU

JOOMLA! OVERVIEW

WHAT'S NEW IN 1.5?

WHAT'S NEW IN 1.5?

JOOMLA! OVERVIEW

JOOMLA! OVERVIEW

JOOMLA! OVERVIEW

POLLS

Joomla! is used for?

☐ Community Sites
 ☐ Public Brand Sites

Sidebar 1

Sidebar 2

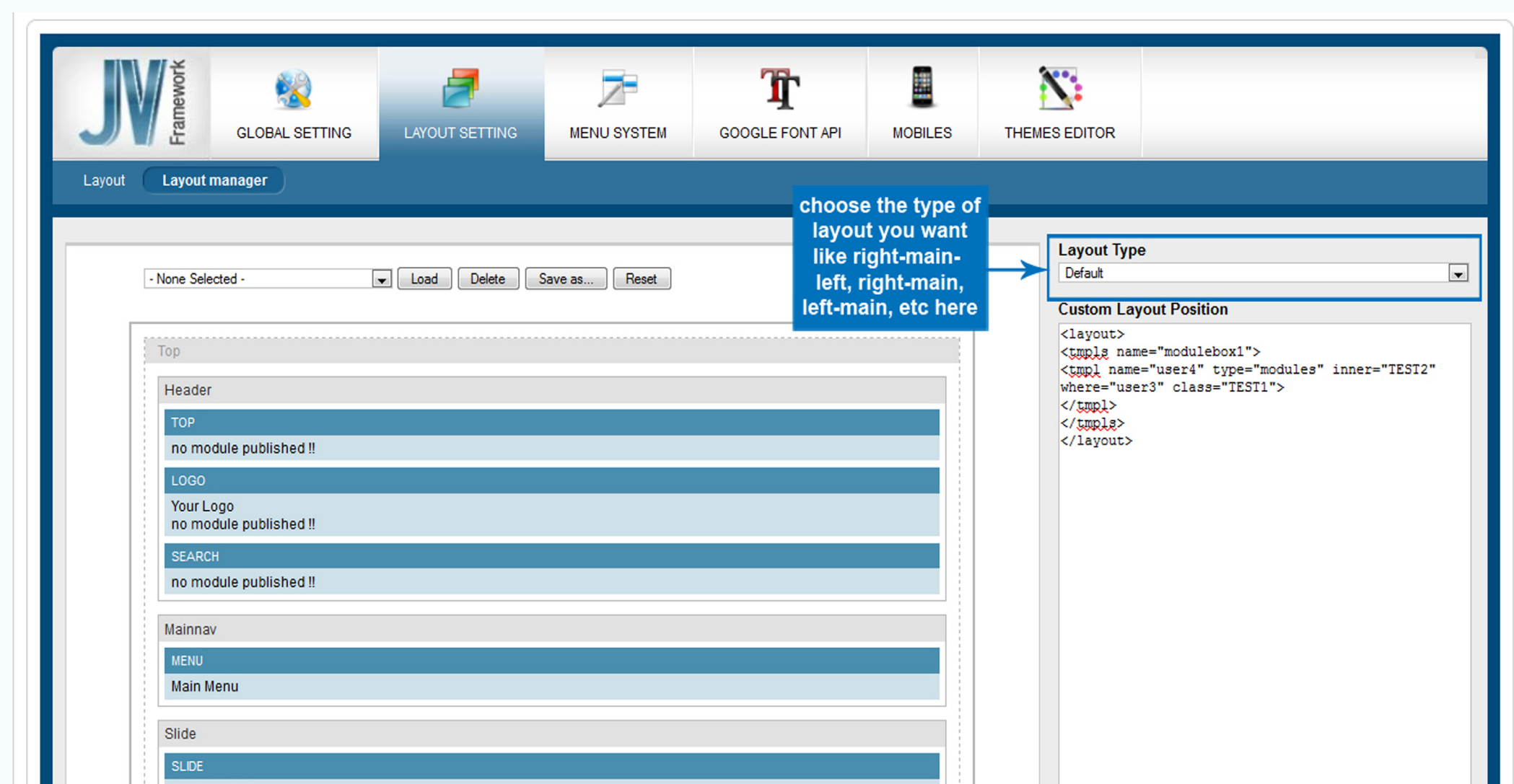
Page 7

Layout manager

This is where you can manipulate the positions to change your layout, with our unique drag and drop system that no Joomla Framework ever implemented before.

Layout Type

This is where you choose the type of layout like left-main, left-right-main, right-main, right-main-left, etc.



Drag and Drop Interface

Levels:

The drag and drop window divides the layout into 3 levels:

-Position: This is, well, the Positions, the place where you put your menus, modules, banners, Copyright claims, etc. Several Modules can be placed in one position. Position cannot contain Block, Group or another Position.

-Block: Block is larger and thus cannot be contained in a Position. There can be none or several Positions within a Block. A Block also can't be inside another Block.

-Group: The largest/highest level. One Group can have none or several Blocks in it. It can't be contained within a Block, Position or another Group.

Menu:

Groups, Blocks and Positions all have a group of buttons on their upper right corner. These buttons can be used to collapse Group or Block, add new Block or Position, edit the properties of Block or Position and delete Block or Position.

In this guide, they will be called Group Menu, Block Menu and Position Menu.

Group Menu

Block Menu

Position Menu

Moving:

To move a Block or Position, all you have to do is drag it to the Group or Box you like and drop. Please note that Group can't be move.

A Block can be moved to another spot in its Group or to another Group

A Position can be moved to another spot in its Block, to another Block of the same Group or to another Block of a different Group.

Collapsing and expanding:

Blocks and Groups can be collapsed or expanded with the upside-down blue-triangle button within their menus

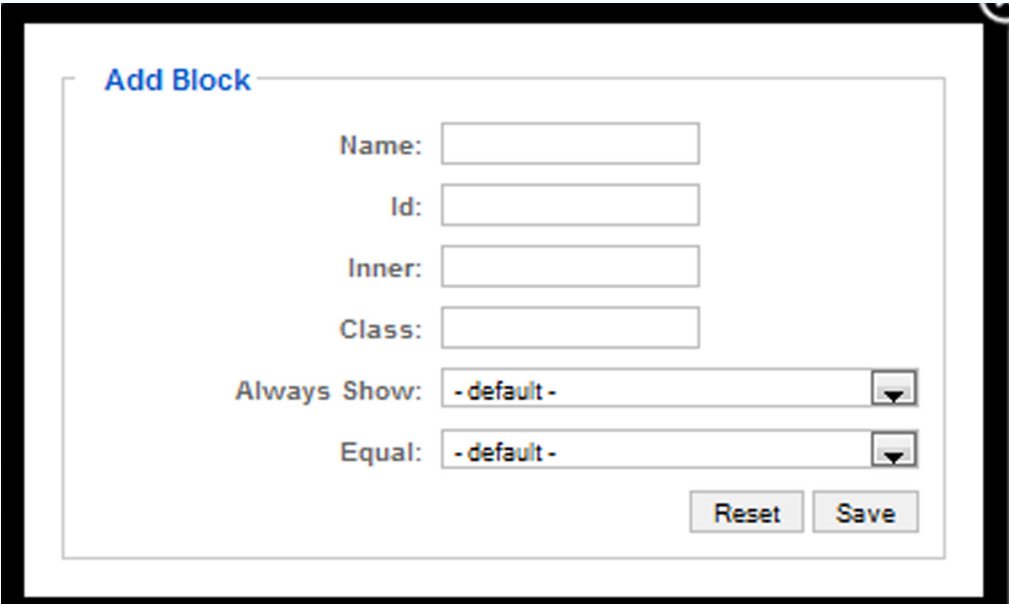
Adding Block/Position:

Clicking on the green 'plus' (+) button found on a Group menu or Block menu will open the Add Block or Add Position box, respectively. Enter the required information to create a new Block or Position.

Add Block box:

- Name: The name of your new Block (required)
- Id: This is the Id that will be assigned to the Block within the database. Filling this field is optional, but recommended
- Inner: A HTML attribute. What you typed in here will be assigned as class to an inner <div> tag within the Block. This field is optional.
- Class: A HTML attribute. What you typed in here will be assigned as class to an outer <div> tag that covers the entire Block. This field is optional.
- Always show: If this value is set to false, Positions without any published module in this Block will be hided. If this value is set to true, all Positions within this Block that have html code will be displayed, even if there are no published module inside them. The default value is false.
- Equal: Equalizing the width or height or both of Positions within this Block. The default value is equal.
 - +Width: The width of all Position within this Block will be equalized.
 - +Height: The height of all Positions within this Block will be equalized using the longest height as standard.
 - +Equal: Both the width and height of all Positions within this Block will be equalized.

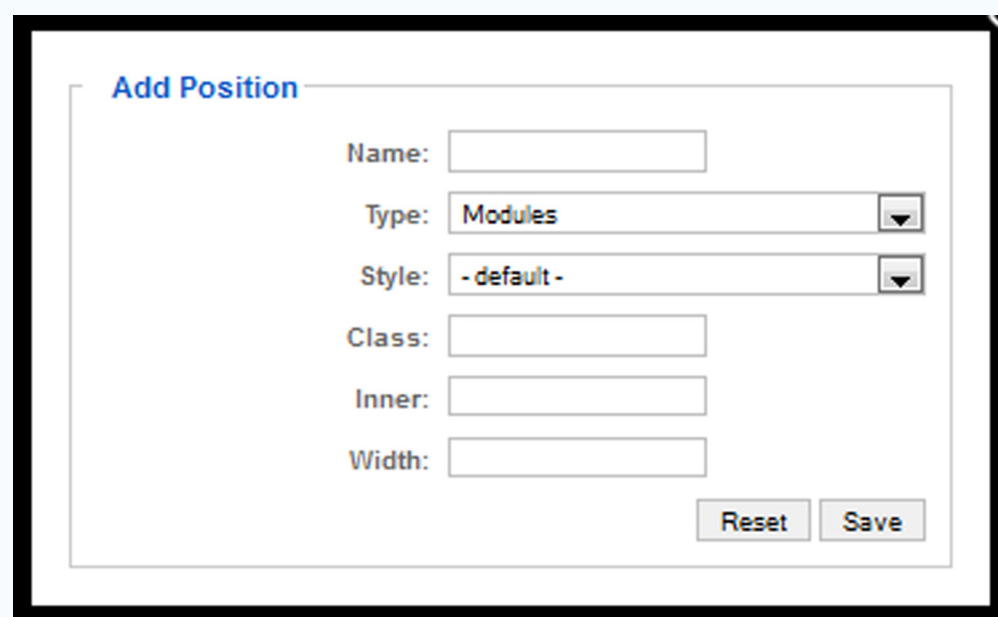
- Reset: Reset all fields.
- Save: save the properties and create Block.



The screenshot shows a window titled "Add Block". Inside, there are four text input fields labeled "Name:", "Id:", "Inner:", and "Class:". Below these are two dropdown menus. The first is labeled "Always Show:" and the second is labeled "Equal:". Both dropdown menus show "- default -" as the selected option. At the bottom right of the form are two buttons: "Reset" and "Save".

Add Position Box:

- Name: The name of your new Position. This is required to create a new Position.
- Type: Type of the Position, equivalent to Jdoc's type attribute. The default value is 'Modules'
- Style: The Position's style, the same as Jdoc's style attribute. We also provide 3 additional styles: JVxhtml, JVround and JVround2. The default value is JVxhtml.
- Class: What you type into this field will be assigned as class of the Position. This is optional.
- Inner: This will be assign as the class of a <div> tag within the Position. This is optional.
- Width: The Position's width. This value is in percentage format. Once set, It will overwrite the equal attribute of the Block. If there is only one Position within this block, its width will always be 100%
- Reset: Reset all fields.
- Save: save the properties and create Position.



Editing

To edit the properties of Block or Position, click on the edit button found within the Block menus or Position menus, respectively.

These properties are the same with those found within an Add Position or Add Block box.

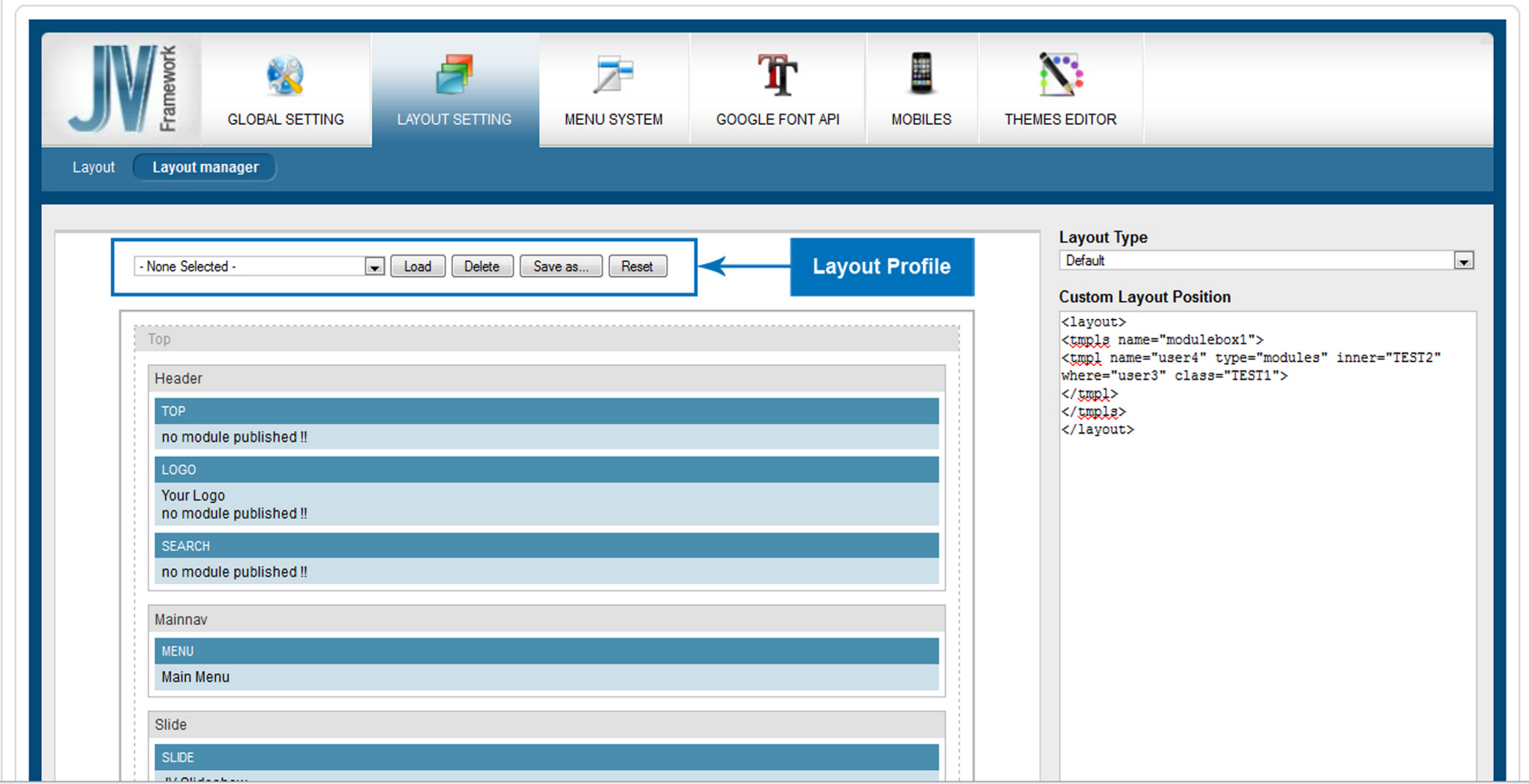
Deleting Block/Position:

To delete a Block or Position, simply click on the orange cross (x) button on that Block or Position's menu. Click yes to confirm that you want to delete the Block/Position.

Layout Profile

The Layout Profile lets you manage the modifications made within the ‘Layout Manager’ sub-tab in the form of .xml ‘profile’ files.

- Select profile: You can select a ‘.xml’ profile you want to reuse or delete with this drop-down menu.
- Load: After selecting the profile you wanted to re-use, click on this button to load it.
- Save as: Save the current Layout as a new profile.
- Reset: Reset the Layout Manager sub-tab to its default state

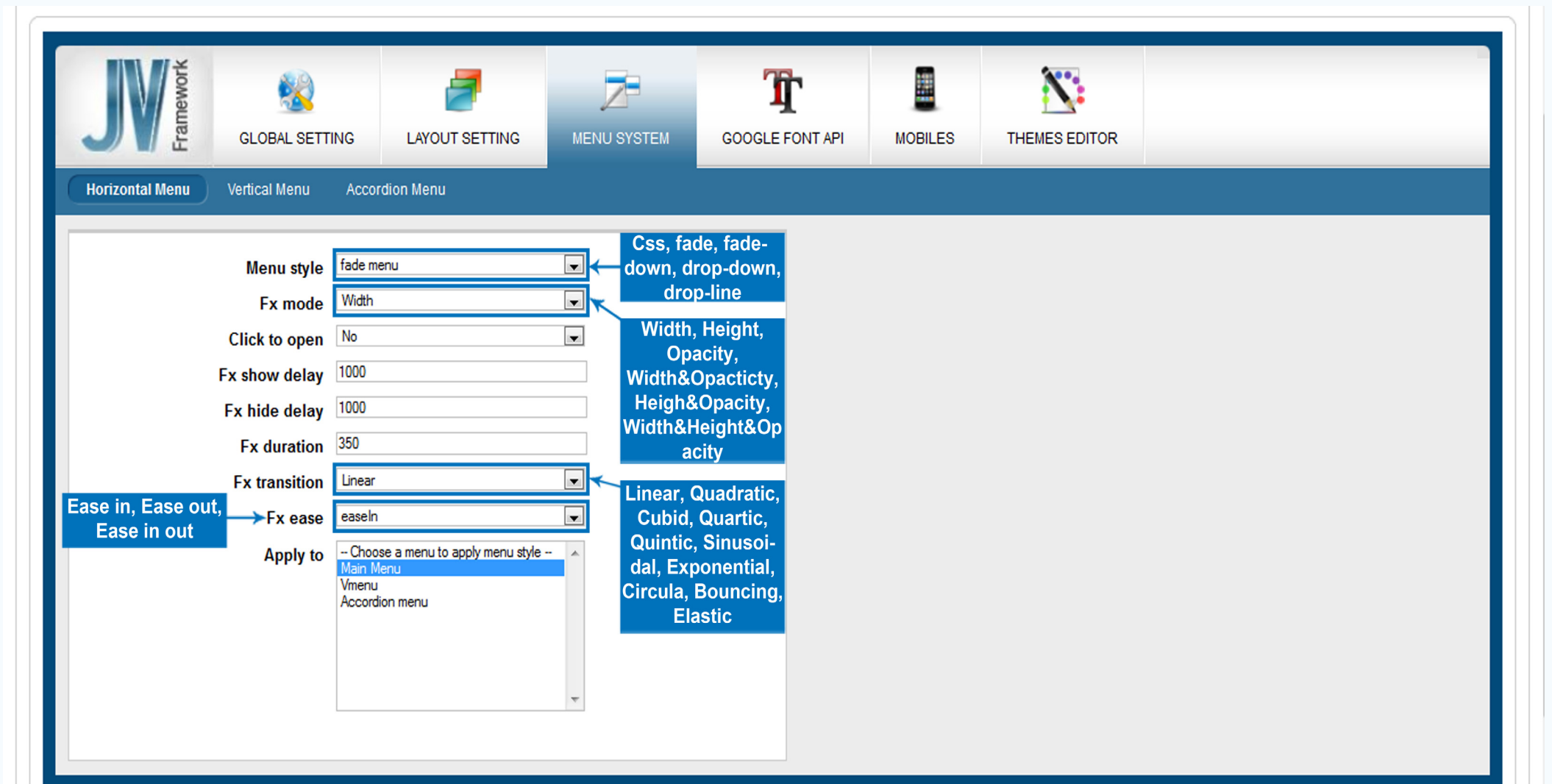


Menu System

Horizontal Menu:

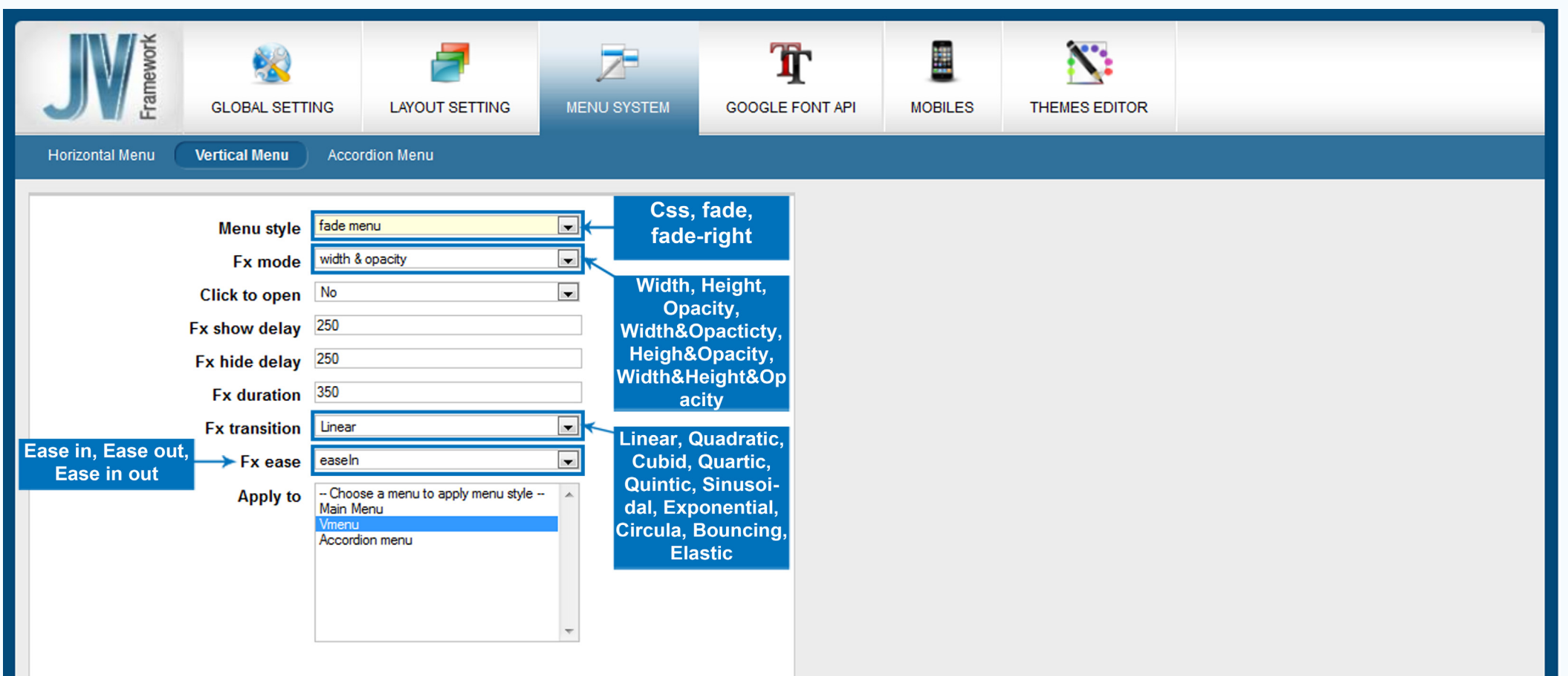
This sub-tab deal with the look of horizontal menu (s)

- Menu style: Choose your menu(s)’s style. This mainly affects the way the sub-menu(s) is/are opened
- Fx mode: Choose a special effect for your sub-menu(s) during its/their appearance.
- Click to open: Determine whether you have to click to open sub-menu(s) or not.
- Fx show delay: The delay (in milliseconds) before your effect takes place.
- FX hide delay: The delay (in milliseconds) before your sub menu(s) is/are hidden.
- FX duration: How long the effect would last (in milliseconds), which also affects how long it will take for the sub-menu(s) to appear.
- FX Transition: The transition effect for the sub menu(s)
- FX ease: Select whether you want the sub menu(s) to ease in, ease out or both.
- Apply to: Chose the menu(s) that you want to apply all the properties above to.



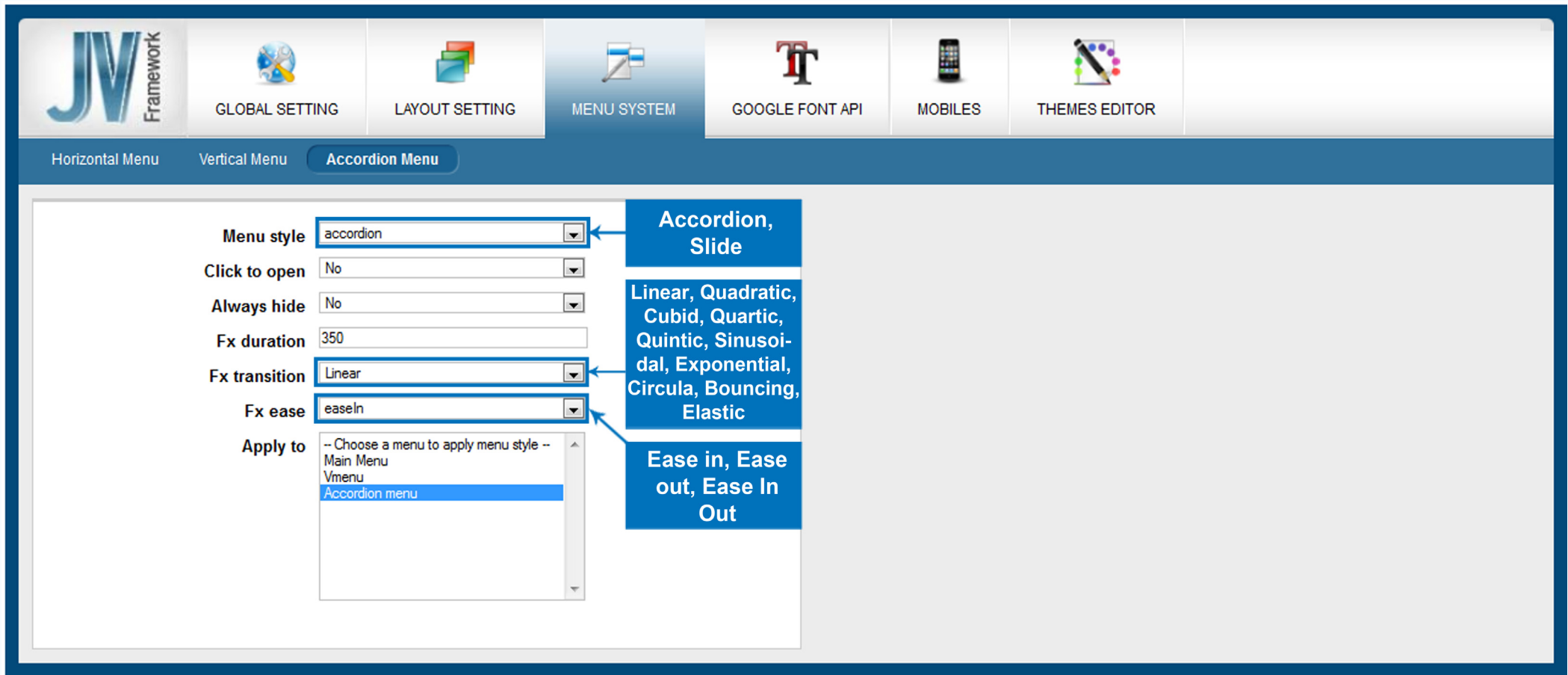
Vertical Menu

- Menu style: Choose your menu(s)'s style. This mainly affects the way the sub-menu(s) is/are opened
- Fx mode: Choose a special effect for your sub-menu(s) during its/their appearance.
- Click to open: Determine whether you have to click to open sub-menu(s) or not.
- Fx show delay: The delay (in milliseconds) before your effect takes place.
- FX hide delay: The delay (in milliseconds) before your menu(s) is/are hidden.
- FX duration: How long the effect would last (in milliseconds), which also affects how long it will take for the sub-menu(s) to appear.
- FX Transition: The transition effect for the sub menu(s)
- FX ease: Select whether you want the sub menu(s) to ease in, ease out or both.
- Apply to: Chose the menu(s) that you want to apply all the properties above to.



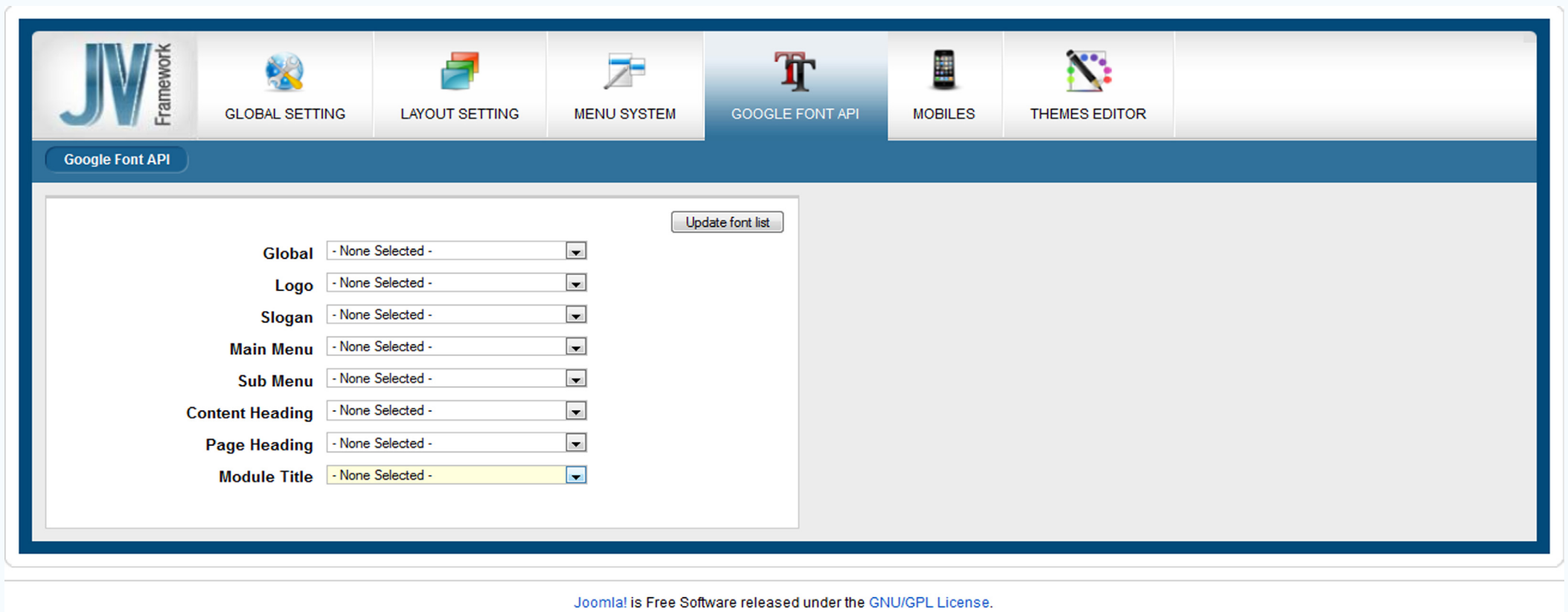
Accordion Menu

- Menu style: Choose your menu(s)’s style. This mainly affects the way the sub-menu(s) is/are opened.
- Click to open: Determine whether you have to click to open sub-menu(s) or not.
- Always hide: Allow you to collapse/hide the sub-menu of an accordion menu.
- FX duration: How long the effect would last (in milliseconds), which also affects how long it will take for the sub-menu(s) to appear.
- FX Transition: The transition effect for the sub menu(s)
- FX ease: Select whether you want the sub menu(s) to ease in, ease out or both.
- Apply to: Chose the menu(s) that you want to apply all the properties above to.



Google Font API

- Global: Set the font for the whole page. When used, this value will override the font family set in ‘Layout Setting’.
- Logo: The font for the text logo. This has no effect if an image was used as the logo.
- Slogan: The font of the slogan. Only work with text logo.
- Main Menu: The font for your Main Menu(s).
- Sub Menu: The font for your Sub Menu(s).
- Content Heading: The font for Component Heading(s).
- Page Heading: The font for the Page Heading(s).
- Module Title: The font for the title of your Module(s)



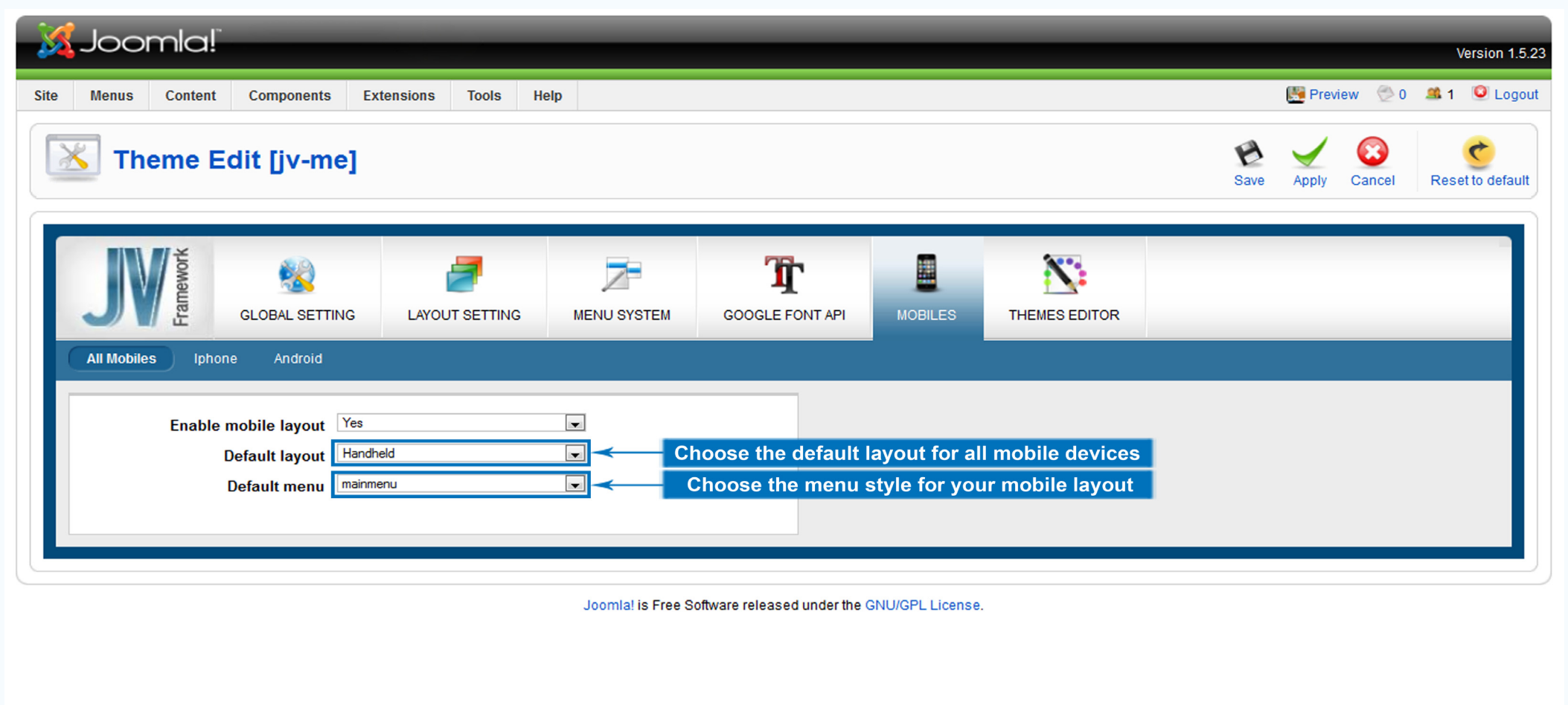
Mobile:

This tab deals with your page's layout when accessed via a Mobile device.

All Mobiles

You can enable/disable mobile layout and choose the default layout for all mobile devices.

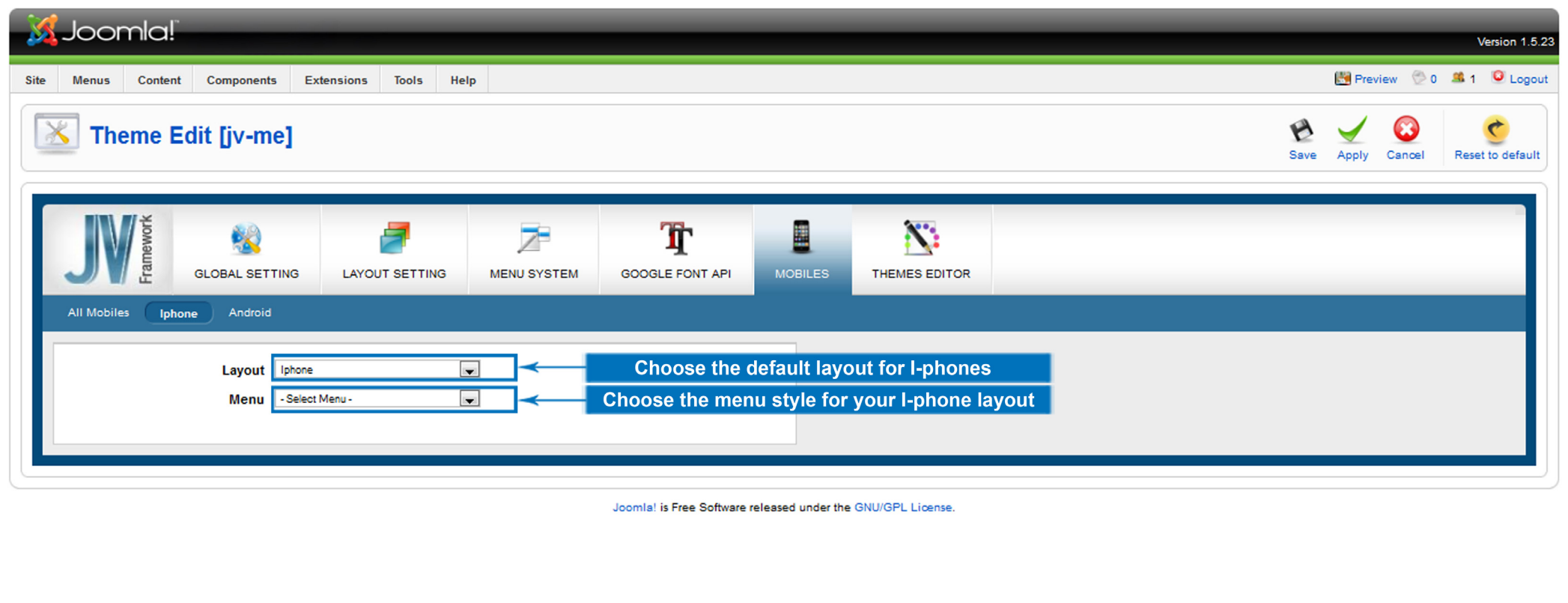
- Enable mobile layout: If this is enabled, when your page is accessed from a Mobile device, a lighter version of your layout will be loaded. Visitors can switch between this lighter layout and a desktop layout.
- Default Layout: The default layout for all mobile devices accessing your page.
- Default Menu: The style of Mobile layout's menu.



I Phone

This sub tab allow you to choose the layout and menu style for I-phone

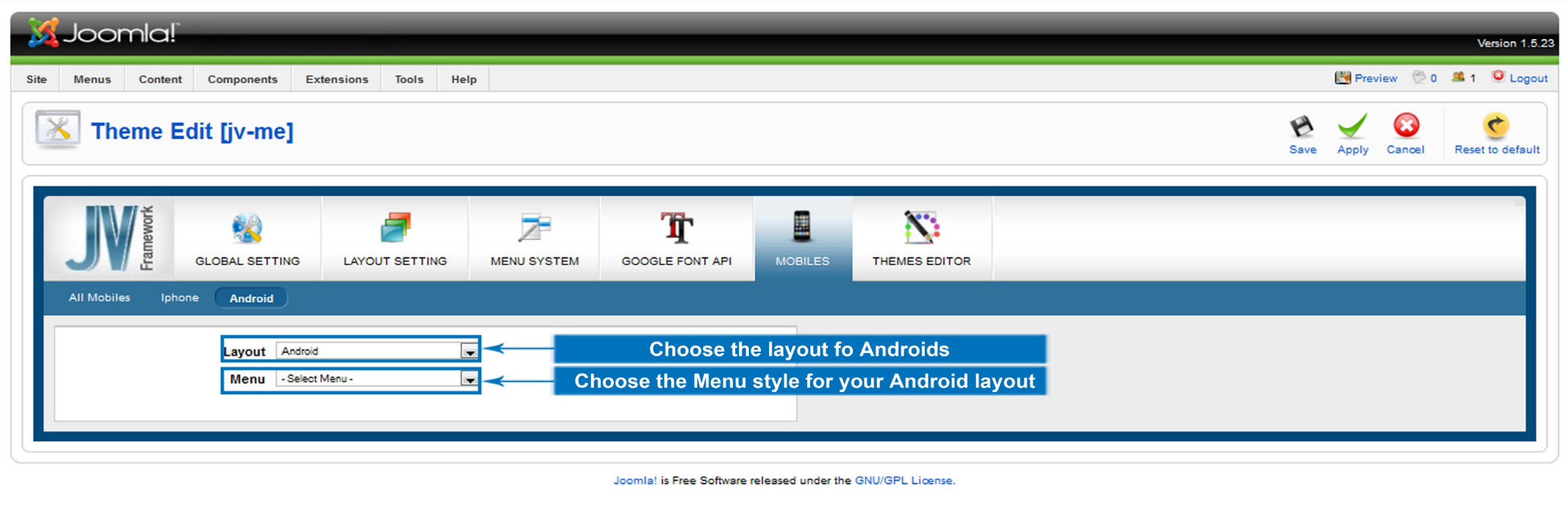
- Layout: Chose the layout for your website when accessed from an I-phone
- Menu: Chose the style for your menu when accessed from an I-phone



Android

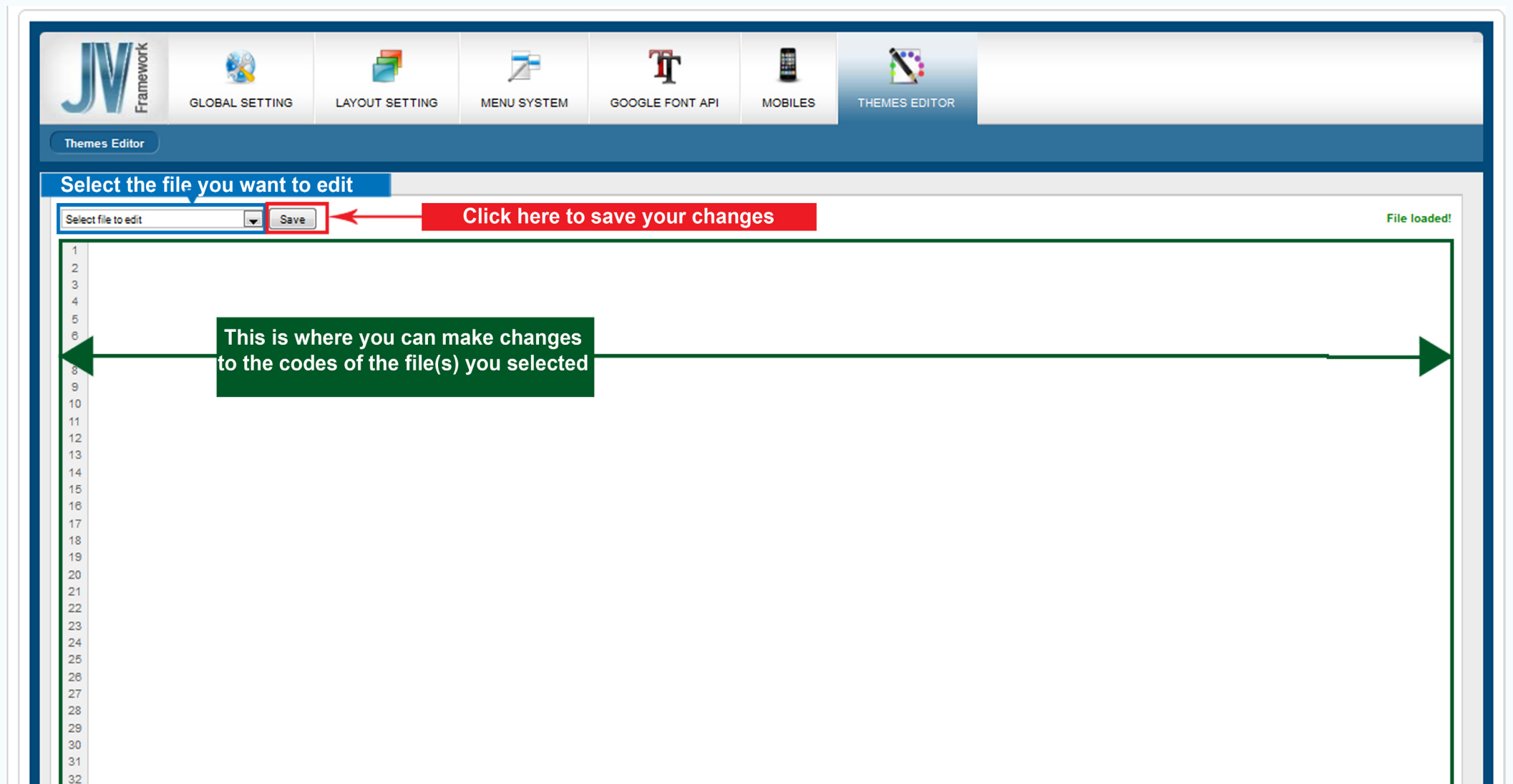
This sub tab allow you to choose the layout and menu style for Android

- Layout: Chose the layout for your page when accessed from an Android
- Menu: Chose the style for your page's menu when accessed from an Android



Theme Editor

Theme Editor tab allows you to edit various source files to further customize the theme, provide that you know how to write codes for .css/.xml/.ini files.



This is the end of the JV Framework for Joomla! 1.5 User Guide.

I hope it'd be useful for those who took an interest in this Framework but had trouble figuring out how it works.

Good luck tinkering!